



CRUISERS YACHTS

34 GLS OB



34 GLS OB

The GLS series continues its powerful, entertainment-centered yacht line with the 34 GLS. The 34 GLS's cockpit features two cockpit L-shaped seating areas. The portside seating has an adjustable backrest while the larger starboard side seating converts into a large, aft facing sunpad. The lower salon features an aft stateroom, a dinette that converts into a berth, fridge, and microwave.

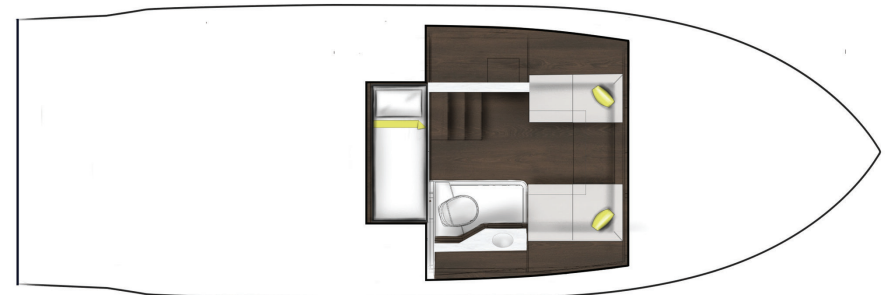
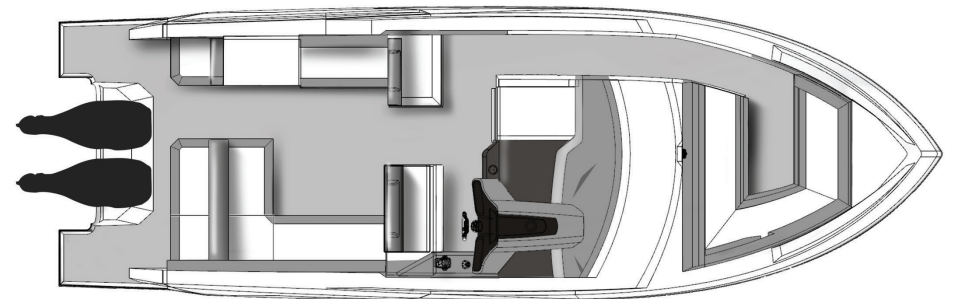


Specifications

	IMPERIAL	METRIC
LOA - OUTBOARDS DOWN	35' 10"	10,9 m
LOA - OUTBOARDS UP	38' 4"	11,7 m
BEAM	11' 10"	3,6 m
BRIDGE CLEARANCE (TOP OF MAST LIGHT)	12' 11"	3,94 m
DRAFT DOWN	42"	1,1 m
DRAFT UP	26"	0,7 m
FUEL CAPACITY	217 gal	821 L
WATER CAPACITY	25 gal	94,63 L
WASTE CAPACITY	25 gal	94,63 L
WEIGHT - DRY	15,800 lbs	7167 kg

*** Weight, Bridge Clearance, Draft subject to change ***

*** Consumable liquids may be less than max capacity ***





BOW SEATING - The bow seating features a table that easily converts into a sunpad, Rockford Fosgate speakers, and multiple cupholders. An optional foredeck shade keeps your guests nice and cool.

HELM - The helm aboard the 34 GLS is impeccably designed with Simrad electronics and joystick piloting. Underneath the bolster helm chair is storage or optional ice maker.



COCKPIT - The 34 GLS's cockpit features two cockpit L-shaped seating areas. The portside seating has an adjustable backrest that when flipped in the aft facing position, makes a companion seat. On the larger starboard side, the aft backrest can be flipped into the forward position to create a large aft-facing sunpad. There is also a personal, aft-facing seat on the port side.

GALLEY - The galley features a fiberglass inlay sink, fridge, grill, and storage. The galley is located in the cockpit for easy flow of conversation to guest sitting on the L-shaped seating.

TWIN MERCURY VERADOS - The joystick piloting allows you to navigate with ease at the top speed of 46 mph or cruise at 37 mph with the 600 hp option.



AFT STATEROOM - Need to rest for the night? The aft stateroom aboard the 34 GLS features a custom sized berth, and personal reading lights.

LOWER SALON - The lower salon features a dinette that converts into a spacious berth. The lower galley is complete with a fridge, microwave, and TV.

HEAD - The 34 GLS head features a sink, toilet, and standing shower. Storage hidden behind the mirror and underneath the sink allows you to tuck away personal items.





34 GLS OB

Standard Features

Engine Options

GAS ENGINES

TWIN MERCURY VERADO 300 (600 HP)
TWIN MERCURY VERADO 350 (700 HP)
TWIN MERCURY VERADO 400 (800 HP)
TWIN MERCURY VERADO 450R (900 HP)

HULL COLOR

White

WEATHER COVERS

Bow & Cockpit Seat
Black

SEATING COLOR

White and Gray

WOOD COLOR

Ebony Oak

INSTRUMENTS

Horn
Joystick Piloting

MECHANICAL

AC/DC Panel w/ Voltmeters
Anchor
Battery Charger
Battery Parallel Switch
Bilge Coating, White
Bilge Pumps (3), w/High Water Alarms
Bonding Systems w/Transom Zinc
Bronze Seacocks and Thru Hulls
on all Underwater Fittings
Dockside Power – Dual 30 Amp Service
Engine Room Blowers
Fire Extinguisher, Automatic
Fire Extinguishers, Handheld (3)
Fuel Overflow Recovery System
Ground Fault Interrupt Outlets
Hydraulic Trim Tabs
LED Lighting
Seawater Strainers
Stainless Steel Propellers
Tilt Steering Wheel

MAIN DECK

Walk-Thru Windshield
Cockpit Shower
Deck Cleats
Dockside Water Hookup
Fiberglass Cockpit, Self Draining
Gunwale Molding, Stainless Steel
Hardtop, White
Helm Seat Storage
Storage (2), L-Shaped Seating
Transom Boarding Gate
Welded Stainless Bow Rails
Windlass
Windshield Wiper
Wireless Phone Charging Pad

WETBAR

Sink, Set in Fiberglass
Solid Surface Countertop
Storage Under Wet Bar

ACCOMMODATIONS LEVEL

Aft Berth
Amtico Flooring
Head Sink
Electric Head w/ Holding Tank
Interior Storage
Microwave
Mirrors w/ Storage, Head
Opening Port Hole Above Lower Salon
Entry Stairs
Opening Port Hole in Head
Refrigerator
Shower in Head
Starboard Window

For more information on the 34 GLS OB
or to locate a dealer, please visit
cruisersyachts.com