

S
CLASS





EXPERIENCE THE
EXCEPTIONAL

Your yacht is an extension of yourself. A statement of your lifestyle. She needs to deliver unforgettable experiences for you, your family and friends. Every Princess yacht is designed with our forward-thinking mentality and crafted with meticulous attention to detail. So whether you're dashing across the water or moored in your favourite bay, you will recognise the difference our design and details make, inside and out.

Experience the exceptional.



CRAFTED IN PLYMOUTH

Perched on the edge of the English Channel lies the city of Plymouth, where we established our home in 1965. Today Princess shipyards cover an area of over 1.1 million square feet, an area rich in British maritime heritage. In fact, South Yard, where our X Class Super Flybridge yachts are constructed, is a former naval yard dating back to the 17th century. From the outset, our goal has been to meticulously sculpt our yachts around our owners' enjoyment of them. Such dedication and attention to detail resonates deeply with our Plymouth craftspeople.

Over 3,000 people, each possessing a mastery of their skill, fastidiously realise this vision in our shipyards. Through a culture of innovation, our yachts are not only some of the most technically-advanced in the world but also the most beautifully realised.



1965

Our story has humble beginnings. In 1965 David King and two friends fitted out their first boat in an old fertiliser store in Plymouth, England. They named her 'Project 31'. Originally destined for charter, the first Project 31 was purchased by a keen boater and two more were built shortly afterwards, marking the beginning of what is today one of the world's leading shipyards. In fact over 130 Project 31 yachts were produced and sold between 1966 and 1969.



TODAY

Over 17,000 boats later, the S62 and S66 are the very latest additions to our S Class range. Delivering captivating performance and luxurious beauty, they are proud symbols of our experience and expertise - at the zenith of luxury yacht manufacturing. Finished to high specifications throughout, the new S62 and S66 are everything we've learned, distilled into the finest on water experience.





S CLASS

Cool and captivating. Balanced. Distinctively luxurious and spaciousness throughout, the extensive cockpits, garages and aft sunpads entice you to enjoy watersports and the great open air. A sports experience with generous interior accommodation for entertaining, our S Class craft are a haven of relaxation, and exhilaration is on tap, for when you need it.





S 72



Dynamic extended styling lines synonymous with the Princess S Class define the S72. Equipped with twin MAN V12 engines at 1650 or 1800 horsepower and a resin-infused deep-V hull, she delivers dynamic performance and smooth handling at speeds of up to 36 knots. The cockpit features a unique sociable U-shaped seating area with modular seating, folding teak table and servery unit – the perfect place to entertain, or to sit back, relax, and enjoy the yacht’s exhilarating performance. The cockpit bar connects to the galley unit to create an almost seamless transition from outside to in, with a glass window partition which folds up from the unit below to provide servery access when entertaining.





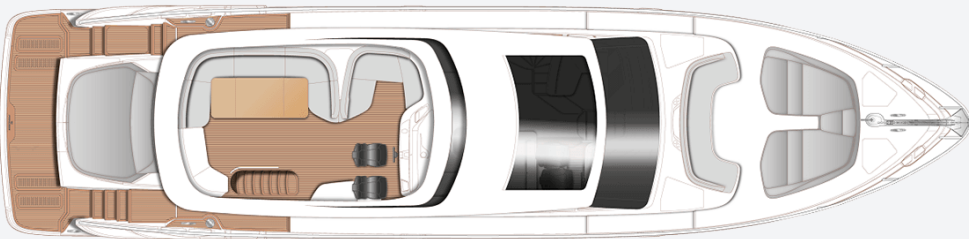
The saloon is designed for sociable living, with a large L-shaped dining area opposite the fully equipped galley, leading to a cavernous main deck saloon with U-shaped sofa, Princess Design Studio coffee table, and an elegant sideboard unit containing a 55" UHD LED TV on rise and fall, plus companion seating with fold out table opposite the main helm.

Below deck, eight guests enjoy four beautifully appointed cabins, three of which are en-suite, all bathed in natural light from elegant hull glazing, with a further twin cabin with en-suite aft for occasional guests or crew. A dedicated staircase leads from the main deck to the full-beam owner's stateroom amidships, via a private lobby area in the lower companion way.

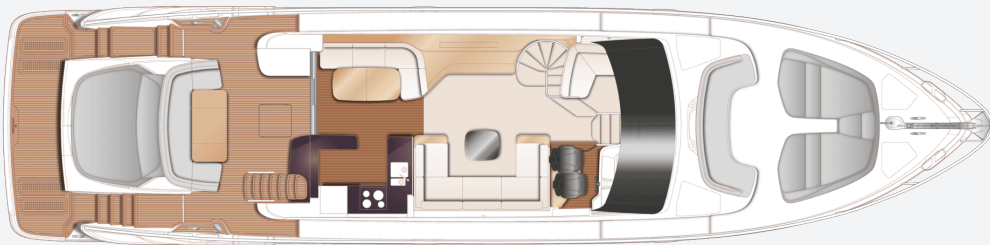




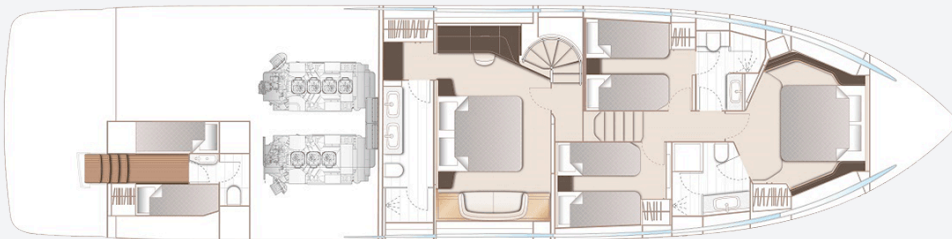
S72
SPECIFICATION



S72 Flybridge



S72 Main Deck



S72 Lower Deck

PRINCIPAL DIMENSIONS

Length overall (incl. pulpit)	75ft 9in (23.09m)
Length overall (excl. pulpit)	73ft 3in (22.30m)
Beam	18ft 1in (5.52m)
Draft	5ft 8in (1.72m)
Displacement approx. (lightship)	52,461 kg (122,271lbs)*
Fuel capacity	990 gal/1,189 US gal/4,500l
Water capacity (excl. calorifier)	184 gal/221 US gal/836l

ENGINES

Twin MAN V12-1800 (2 x 1,800hp)	Speed range: 34-36 knots†
--	------------------------------

FULL SPECIFICATION

DECK FITTINGS

- Teak laid transom platform, transom steps, cockpit deck, sportbridge and sportbridge stairway areas. Teak laid side deck and foredeck walkthrough areas are optional
- Reversible electric anchor winch with foredeck, main helm and sportbridge controls
- Stem head roller with automatic anchor launch and retrieve
- Self-stowing 50kg/110lbs Delta anchor with 60m of 12mm chain
- Twin electric stern line mooring winches
- Deck hatch access to chain locker
- Bow rope stowage locker
- Freshwater deck/anchor wash
- Stainless steel bow and stern fairleads
- Stainless steel bow, stern and spring cleats (2 pairs)
- Stainless steel pulpit and guard rails
- Stainless steel coachroof and sportbridge handrails
- Foredeck escape hatch
- Foredeck U-shaped seating area

- Foredeck sunbathing area, twin sunbeds with integrated adjustable headrests with aft facing seat conversion. Storage locket between sunbeds with optional cool box
- Twin coachroof lockers for storage of fenders, ropes and covers
- PVC rubbing band with stainless steel insert
- LED deck level lighting integrated into scene selection lighting control
- Illuminated crown logo on transom
- Full set of IMCO navigation lights
- Riding light
- Stern docking lights
- Twin beam searchlight with dual station remote controls
- Loudhailer
- Twin electric horns
- Ensign socket and pole
- Fuel and water fillers
- Holding tank dockside discharge connection

COCKPIT AND BATHING PLATFORM

- Self-draining
- Upholstered U-shaped seating and sunpad. Forward sections movable to reconfigure cockpit
- Folding teak table with drink rings
- Served unit
- LED overhead and deck level lighting integrated into scene selection lighting control
- Stainless steel handrails
- Garage to take tender 3.9m with electro-hydraulic door and tender launch system with electric winch
- Top hinged door to aft crew cabin
- Lockable gas strut assisted hatch to engine room/lazarette
- Liferaft stowage locker
- Rope storage lockers
- Locker containing remote fuel cocks, manual bilge pump with valve chest and manual controls for automatic fire extinguishers (to include gas ram)
- Integral stairway to sportbridge with teak step

- treads
- Cockpit cover
- Twin transom gates leading to bathing platform
- Retractable bathing ladder (manual) in side of hydraulic platform
- Transom steps to access stern from bathing platform when in lowered position
- Hot and cold transom shower
- 220/240v shore support inlet
- Electro-hydraulic raise / lower teak laid bathing platform (450kg SWL)
- Standard teak with Princess logo (small)
- Bathing platform aft rail
- Transom locker with internal rail in garage door

SPORTBRIDGE

- Dual station instruments and controls (see Lower Helm Position) and USB sockets (2) (each comprising 1x USB-A and 1x USB-C)
- Power assisted electro hydraulic steering with adjustable wheel
- Audible and visual alarm for bilge pumps
- Engine-room fire extinguisher warning system
- Twin helm seats with fore and aft adjustment for helmsman
- Port L-shaped seating (converts to sunbed)

- Large U-shaped upholstered seating
- Cup holders between L-shaped and U-shaped seating
- Folding teak table with drink rings
- Wet-bar with barbecue, sink, waste bin and storage
- Storage locker and navigator seat pedestal with integrated cool box
- Naim Uniti Atom audio unit with JL Audio M6-650X-L waterproof speakers (2)
- Clear view hatch to aft cockpit with stainless safety rail with glass balustrade
- Wind deflector screens
- Stainless steel handrails
- LED deck level lighting integrated into scene selection lighting control
- GRP radar arch
- Twin matching whip aerials for VHF R/T and radio
- Console, table and seat covers
- Optional GRP hardtop panel

LOWER HELM POSITION

- Twin leather helm seats with fore and aft adjustment for helmsman's seat
- Instrument console with LED display

- incorporating engine instruments, fuel gauges, alarms and rudder position indicator
- Dual station instruments and controls at Sportbridge and Lower Helm Positions:
 - Power-assisted electro-hydraulic steering
 - Adjustable steering wheel
 - High-speed magnetic compass
 - Electronic engine controls
 - Bow thruster control
 - Electric anchor winch remote control
 - Colour radar (with scanner) and GPS/chartplotter
 - Autopilot
 - Speed and distance log
 - Echo sounder with alarm
 - VHF with DSC R/T with intercom
 - Remote control searchlight
 - Horn button
 - Controls for standard trim tabs
- Bönning system integrated with the following functionalities (displayed on separate dedicated display at helm):
 - Engine instrumentation (including fuel levels and fuel flow)
 - Digital boat alarms
 - Scene selection lighting controls

- AC/DC control and monitoring
- Drinks holders
- Toughened glass screen (clear for night vision) with windscreen demist system
- Windscreen wipers with freshwater windscreen wash
- Black mesh sunscreens
- Bilge pump controls with visual pump running warnings
- 24v and 240v electrical control panel
- Riding light, helm and navigation light control switches
- USB connection point (1x USB-A and 1x USB-C)
- LED overhead lighting (24v) and night lighting integrated into scene selection lighting control
- Pantograph helmsman's door to starboard side deck
- 'V' groove planked timber flooring

SALOON

- U-shaped sofa
- Coffee table
- L-shaped sofa opposite helm area with fold-out companion table and 220/240v outlet
- Sideboard unit with bottle and glass storage
- Refrigerator

- UHD LED TV (55") on rise and fall
- Naim audio system paired with speakers (2) and subwoofer
- Electric drop window to port
- Venetian blinds (in matte black) to all windows
- Dimmable LED overhead and concealed lighting (24v) integrated into scene selection lighting control
- Access stairway to lower accommodation
- Separate access stairway to owner's stateroom
- Fitted carpet

DINING AREA

- L-shaped sofa
- Folding dining table, Solid Surface countertop with timber edge
- Stainless steel framed sliding patio door to cockpit with integrated hinging window aft of galley
- Venetian blinds (in matte black) to windows and manual skysol blind to patio door
- Dimmable LED overhead and concealed lighting (24v) integrated into scene selection lighting control
- USB connection points (1x USB-A and 1x USB-C)

- 'V' groove planked timber flooring

GALLEY

- Solid surface worktop
- Solid surface countertop to cockpit and port servery unit
- Ceramic 4-zone induction hob
- Hob extractor
- Combination microwave/convection oven with grill
- Solid Surface 1.5 bowl sink with mixer tap
- Chopping board
- Full height refrigerator/deep freeze
- Dishwasher
- Icemaker
- Waste bin
- Drawers and storage cupboards
- Venetian blinds (in matte black) to window
- LED overhead and task lighting (24v) integrated into scene selection lighting control
- 220/240v outlets (4)
- 'V' groove plank timber flooring

ACCOMMODATION

- All cabins and bathrooms feature opening portholes and air conditioning

- All cabins feature 220/240v power points
- All bathrooms feature electric freshwater toilets and 240v shaver points

OWNER'S STATEROOM LOBBY

- Access stairway to owner's stateroom
- Panoramic window
- Manual venetian blinds
- A washer/dryer with cupboard above is fitted in the forward passageway in the guest accommodation (a separate washer and dryer may be optionally installed in place of the standard unit)
- LED overhead and concealed lighting (24v) integrated into scene selection lighting control
- Fitted carpet

OWNER'S STATEROOM

- Large double bed with drawers below
- Twin bedside tables
- Dressing area with wardrobes and storage
- Built in safe
- Dressing table with chair
- Mirror
- Sofa
- Storage lockers and drawers

- 55" UHD LED TV
- Naim audio system paired with speakers (2)
- Panoramic windows including opening portholes
- Manual venetian blinds
- Dimmable LED overhead and concealed lighting (24v) integrated into scene selection lighting control
- Individual berth lights
- 220/240v outlets (3)
- USB charging point (3) (each comprising 1x USB-A and 1x USB-C)
- Fitted carpet

EN-SUITE BATHROOM

- Twin washbasins and vanity top in thermoformed Solid Surface
- Mirror
- Storage lockers
- Shower compartment with automatic pump out
- Extractor fan
- Window with opening porthole and manual tension venetian blind
- LED overhead and concealed lighting (24v) integrated into scene selection lighting control
- Bathroom accessories

- Flooring in Solid Surface

FORWARD STATEROOM

- Large double bed with drawers below
- Wardrobe with shelves
- Dressing table
- Mirror
- Storage lockers and drawers
- Window with opening portholes
- Manual venetian blinds
- Deck hatch
- LED overhead and concealed lighting (24v) integrated into scene selection lighting control
- Individual berth lights
- 220/240v outlets (4)
- USB charging point (2) (each comprising 1x USB-A and 1x USB-C)
- Fitted carpet

EN-SUITE BATHROOM

- Washbasin and vanity top in thermoformed Solid Surface
- Mirror
- Storage lockers
- Shower compartment with automatic pump out
- Extractor fan

- Window with opening porthole
- Manual tension Venetian blind
- LED overhead and concealed lighting (24v) integrated into scene selection lighting control
- Bathroom accessories
- Flooring in Solid Surface

PORT GUEST CABIN

- Two single beds with drawers below (with option of double bed conversion)
- Bedside table
- Wardrobe with shelves
- Mirror
- Storage lockers and drawers
- Window with opening portholes
- Manual venetian blinds
- LED overhead and concealed lighting (24v) integrated into scene selection lighting control
- Individual berth lights
- 220/240v outlets (2)
- USB charging points (1x USB-A and 1x USB-C)
- Fitted carpet

EN-SUITE BATHROOM

- Washbasin and vanity top in thermoformed Solid Surface

- Mirror
- Storage lockers
- Shower compartment with automatic pump out
- Extractor fan
- Window with opening porthole
- Manual tension Venetian blind
- LED overhead and concealed lighting (24v) integrated into scene selection lighting control
- Bathroom accessories
- Flooring in Solid Surface
- Day access door from passageway (port side)

STARBOARD GUEST CABIN

- Two single beds with drawers below (with option of double bed conversion)
- Bedside table
- Wardrobe with shelves
- Mirror
- Storage lockers and drawers
- Window with opening portholes
- Manual venetian blinds
- LED overhead and concealed lighting (24v) integrated into scene selection lighting control

- control
- Individual berth lights
- 220/240v outlets (2)
- USB charging points (1x USB-A and 1x USB-C)
- Fitted carpet

CREW CABIN

- Top hinge door access from transom
- Two single beds with storage below
- Wardrobe with shelf
- Mirror
- Storage lockers and drawers
- Opening portlight
- LED overhead lighting (24v)
- Individual berth lights
- 220/240v outlets (2)
- USB charging point (2) (each comprising 1x USB-A and 1x USB-C)
- Non-slip safety flooring
- White laminate furniture

CREW BATHROOM

- Washbasin with Carrara white Solid Surface vanity top (gloss finish)

- Mirror
- Storage lockers
- Shower compartment with automatic pump out
- Extractor fan
- LED overhead lighting (24v)
- Bathroom accessories
- Non-slip flooring
- Standard aft lazarette incorporates overhead lighting, access hatch with ladder and storage space via transom top hinged door

POWER AND DRIVE SYSTEMS

- Engine room soundproofed
- High volume air intakes
- Engine room extractor fan with electronic time delay
- Engine exhaust silencers and water-cooled exhausts
- Engine beds integrally moulded with hull for strength and vibration absorption
- Forward and aft engine room bulkheads integrally bonded
- Engines flexibly mounted
- Automatic fire extinguisher with remote override control
- Automatic and manual bilge pumps

- Propeller shafts in Marinemet
- 5-bladed propellers in nickel aluminium bronze
- High speed balanced rudders
- Cathodic protection for sterngear
- Sterngear, engines, fuel tank fillers, etc all electrically bonded
- Bow thruster (250kgf/551lbf) with dual-station controls
- Engine room lighting
- Engine room access and ladder
- Power-assisted electro-hydraulic steering system
- Trim tabs with indicators
- Electronic engine and gear shift controls
- Fresh water supply point in engine room
- Dripless self-aligning shaft seals

ELECTRICAL SYSTEMS

24 Volt:

- 4 x heavy duty batteries for engine starting
- 6 x heavy duty auxiliary batteries
- Battery link facility with remote control at helm position
- Both battery banks are charged using a voltage sensitive relay that parallels both battery banks when a charging source is present

- 1 x 80-amp 24v battery charger and 1 x combination 3.0 kW 70-amp inverter charger
- 6-amp battery charger for generator battery
- Remote battery isolator control switches at main switch panel position
- Circuit breakers on all circuits
- 24v to 12v converters for certain navigation and radio circuits
- 24v to 240v/50Hz inverter for saloon A/V, galley fridge and telephone system
- Galvanic isolation system

220/240 Volt:

- 22.5kW generator in own sound shield with water-cooled and specially silenced exhaust
- Automatic fire extinguisher situated by generator
- 63-amp shore power inlet
- Shore power/generator change over control operated from main control panel
- Polarity check system
- Earth leakage safety trip, circuit breakers on all circuits
- Power points (240v) in all cabins and living areas, helm position and galley
- Shaver points in washrooms

- Smoke detectors (galley, stateroom, lower lobby and crew area)
- Böning system

AIR CONDITIONING

- Air conditioning/heating reverse cycle
- 128,000 BTU chiller with 128,000 BTU fan capacity
- Suitable for ambient temperature to 40°C (e.g. tropical)
- Controls in all cabins and outlets in all areas (includes outlets in bathrooms and crew cabin)
- Standard 22.5kW generator is suitable (N.B. this has sufficient capacity for Gyro stabilisers as well as air conditioning)

FUEL SYSTEM

- Fuel tanks (in NS8 marine grade alloy) with interconnection system giving 4,500l/1,189 US gal/990 gal capacity
- Fuel fillers on port and starboard side decks
- High-capacity duplex fuel filters with water traps and change-over valves, water warning sensors connected to warning lights at lower helm
- Remote fuel cocks in cockpit locker

- Fuel gauges at main helm console

WATER SYSTEM

- Water tanks totalling 836l/221 US gal/184 gal plus 73l/19 US gal/16 gal hot water calorifier
- Water heated by engines and 240v immersion heater
- Automatic water pump with filter
- Main circuit breaker at switch panel
- Water level gauge
- Deck filler
- Electric quiet flush toilet system with 400l/106 US gal/88 gal holding tank, content gauge and low noise electric overboard discharge, with macerator backup system as well as dockside discharge system

FIRE EXTINGUISHERS / CONTROL SYSTEMS

- Automatic/manual override fire extinguishers in engine room
- Hand operated fire extinguishers (7) in owner's stateroom, forward stateroom, port and starboard guest cabins, galley, lower helm position and aft cabin

BILGE PUMPS

- Automatic/manual override electric bilge pumps in engine room (2), rudder area and forward accommodation (6 in all)
- High-capacity manual bilge pump with valve system and suction points in same areas
- Electric bilge pumps have controls and warning lights at main helm and warning light with audible alarm at sportbridge helm

OTHER STANDARD EQUIPMENT

- Ensign staff
- Fenders (8)
- Mooring warps (4)
- Boat hook
- First Aid kit
- Tool kit
- Owner's manual and engine manual
- Functional bed linen supplied to all cabins (except optional crew cabin)
- Set of towels (8 large, 8 hand)
- Set of glassware (8 settings consisting of tumbler and wine glasses)
- Set of Princess china (8 settings consisting of plate, side plate, bowl, cup and saucer)
- Set of cutlery (8 settings of David Mellor "Paris")

cutlery 7 pieces)

- Ship's document case
- Anchor winch back up handle

FINISHES

- Teak-laid decks to transom platform, steps to flybridge and sportbridge
- 'V' groove planked timber floor to galley, dinette and helm
- Furniture in choice of Rovere oak or Alba oak in satin finish. Silver oak or walnut in satin or gloss finishes available as an option
- Solid Surface floors in all bathroom suites
- Thermoformed Solid Surface wash hand basin vanity tops in all bathroom suites
- Galley countertop in Solid Surface with Solid Surface Sylmar White sink
- Choice of high-quality carpet and upholstery fabric from extensive range
- Blinds or sunscreens to all windows, doors and portholes
- Crew cabin has non-slip safety flooring, crew bathroom floor is Solid Surface with Solid Surface vanity tops