

V
CLASS





EXPERIENCE THE
EXCEPTIONAL

Your yacht is an extension of yourself. A statement of your lifestyle. She needs to deliver unforgettable experiences for you, your family and friends. Every Princess yacht is designed with our forward-thinking mentality and crafted with meticulous attention to detail. So whether you're dashing across the water or moored in your favourite bay, you will recognise the difference our design and details make, inside and out.

Experience the exceptional.



CRAFTED IN PLYMOUTH

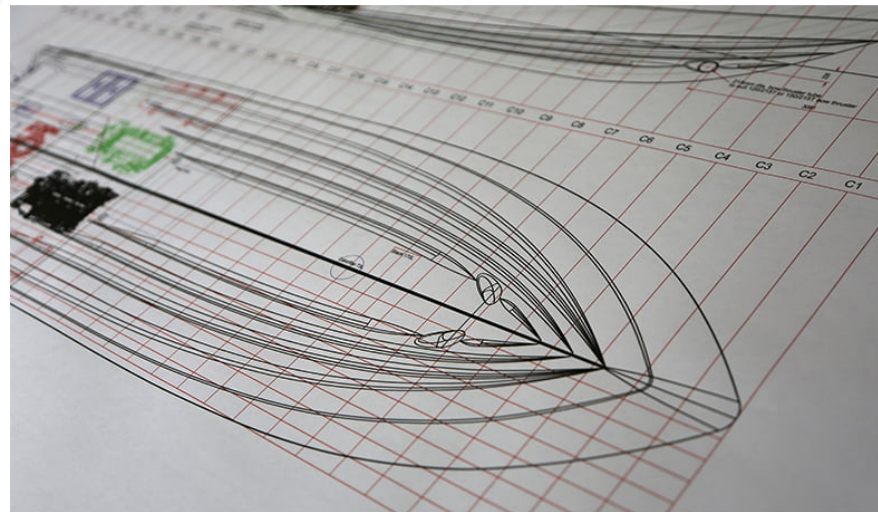
Perched on the edge of the English Channel lies the city of Plymouth, where we established our home in 1965. Today Princess shipyards cover an area of over 1.1 million square feet, an area rich in British maritime heritage. In fact, South Yard, where our X Class Super Flybridge yachts are constructed, is a former naval yard dating back to the 17th century. From the outset, our goal has been to meticulously sculpt our yachts around our owners' enjoyment of them. Such dedication and attention to detail resonates deeply with our Plymouth craftspeople.

Over 3,000 people, each possessing a mastery of their skill, fastidiously realise this vision in our shipyards. Through a culture of innovation, our yachts are not only some of the most technically-advanced in the world but also the most beautifully realised.



DEEPLY INGENUOUS THE PRINCESS DEEP-V HULL


Our pioneering deep-V hulls are born from our naval architect's obsession with exceptional seakeeping and voluminous space. Their sculpted form is shaped from a lightweight, resin-infused hull composite which can create greater internal volume compared to standard hull production methods. This ingenious design ensures it requires less power and burns less fuel to achieve its maximum design speed. Such precision thinking gives rise to the most exhilarating performance, defined by its efficiency, agility and poise. So whether you're slicing through the seas at 40 knots or navigating stormy waters - a foundation of superior engineering rides with you.





V CLASS

Take the helm and the variable geometry of the deep-V hull assuredly translates any surge of power into taut handling. Enjoy a spirited dash across the ocean in a Princess V Class, a paradox of responsive power and exclusive luxury.





V60



The elegant lines of the V60 encapsulate an expansive and sociable cockpit arrangement with a generous seating area and fully equipped wetbar with barbecue. When at anchor, her electro-hydraulic bathing platform creates a convenient launch system for a 3.4m tender, a jet ski, or simply a secluded swimming platform. With twin MAN V8 1200 engines taking you up to 38 knots, she is an altogether adventurous craft.





Forward on her main deck, a retractable sunroof reveals the skies above at the touch of a button. Her sociable galley aft arrangement features an open-plan dining area with sliding doors and a fully opening window leading out to the cockpit. Below deck, six guests are comfortably accommodated across an en-suite full-beam owner's stateroom and two further guest cabins with the option of an additional crew cabin aft.





TAKE A VIRTUAL TOUR OF THE V60

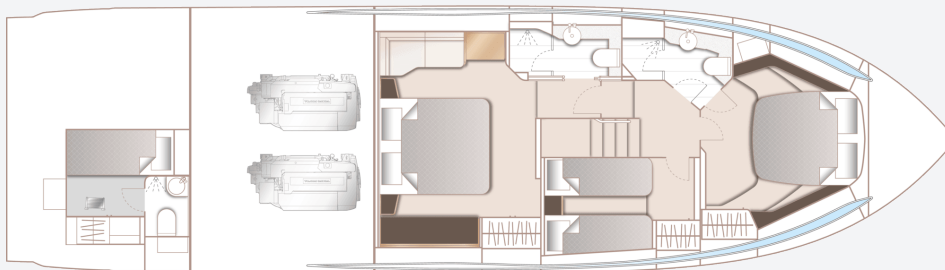




V60
SPECIFICATION



V60 Main Deck



V60 Lower Deck

PRINCIPAL DIMENSIONS

Length overall (incl. pulpit)	62ft 11in (19.17m)
Length overall (excl. pulpit)	62ft 1in (18.92m)
Beam	16ft 0in (4.87m)
Draft	5ft 0in (1.5m)
Displacement approx. (half load)	29,182kg (64,335lbs)*
Fuel capacity	715 gal/858 US gal/3,250l
Water capacity (excl. calorifier)	116 gal/159 US gal/530l

ENGINES

Twin V8 1200 (2 x 1,200hp)	Speed range: 36-38 knots†
-----------------------------------	------------------------------

FULL SPECIFICATION

DECK FITTINGS

- Teak-laid transom platform, cockpit deck and steps to side deck
- Reversible electric anchor winch with foredeck and helm position controls
- Stemhead roller with automatic anchor launch and retrieve
- Self-stowing (32kg/71lb) Delta anchor with 40m of chain
- Bow rope storage locker
- Freshwater deck/anchor wash
- Walk through coachroof seating area
- Deck storage lockers for fenders
- Princess stainless steel bow, stern and spring cleats (8)
- Stainless steel pulpit and guardrails
- Stainless steel coachroof handrails
- Foredeck hatch
- PVC rubbing band with stainless steel insert
- LED deck level lighting
- Illuminated crown logo to transom
- Full set of IMCO navigation lights
- Riding light

- Searchlight with remote control
- Twin electric horns
- Fuel and water fillers

COCKPIT AND BATHING PLATFORM

- Self draining
- U-shaped seating/dining area, folding teak table and folding directors chairs
- Sunbed aft
- Wetbar with barbecue, waste bin top loading coolbox and storage
- LED overhead and deck level lighting
- Stainless steel handrails
- Garage(to take tender up to 3.3m) with electro-hydraulic door and tender launch system with electric winch
- Lifteraft stowage locker
- Rope stowage lockers
- Lockable gas strut assisted hatch to lazarette
- Lockable gas strut assisted hatch to lazarette/ optional crew cabin
- Lockable gas strut assisted hatch to engine room

- Locker containing remote fuel cocks, manual bilge pump with valve chest and manual controls for automatic fire extinguishers
- Twin transom gates leading to bathing platform
- Electro-hydraulic raise/lower teak laid bathing platform (450Kg SWL)
- Retractable bathing ladder (manual) in side of hydraulic platform
- Transom steps to access stern from bathing platform when in lowered position
- Hot and cold transom shower
- Waterproof speakers (2) linked to saloon sound system with local control
- 220/240v shore support inlet in locker
- Tonneau cover

HELM POSITION

- Twin helm seats with fore and aft adjustment for helmsman
- Instrument console with 9" colour mfd screen incorporating engine instrumentation and fuel gauges and rudder indicator
- 16" brilliant colour mfd incorporating GPS/

- chartplotter, log and echo sounder
- Instruments and controls at Helm Position:
 - power-assisted electro-hydraulic steering
 - adjustable steering wheel
 - rudder position indicator
 - high-speed magnetic compass
 - electronic engine controls
 - trim tab controls with indicators
 - bow thruster control
 - electric anchor winch remote control
 - autopilot
 - VHF with DSC R/T with intercom
 - remote control searchlight
 - horn button
- Drinks holders
- Toughened glass screen (clear for night vision)
- Windscreen wipers with freshwater windscreen wash
- Black mesh sunscreens
- Bilge pump controls with visual pump running warnings
- 24v and 240v electrical control panel
- Riding light, helm and navigation light control switches
- USB connection point
- LED overhead lighting (24v) and night lighting

- Electric drop window (24v)
- Timber floor

SALOON

- U-shaped sofa
- Coffee table
- Sideboard unit with bottle and glass storage
- Refrigerator
- UHD LED TV (49") on rise and fall
- Marine audio system with Blu-ray player connected to speakers (4) and subwoofer
- Electric drop window to port
- Blinds or sunscreens to all windows and doors
- Dimmable LED overhead and concealed lighting (24v)
- Access stairway to lower accommodation
- Electric opening roof
- Timber floor

DINING AREA

- L-shaped sofa
- Folding dining table
- Stainless steel framed sliding door to cockpit with integrated hinging window aft of galley
- Blinds or sunscreens to all windows and doors
- Dimmable LED overhead and concealed lighting

- (24v)
- Timber flooring

GALLEY

- Solid surface worktop
- Ceramic 4-zone hob
- Hob extractor
- Combination microwave/convection oven with grill
- Stainless-steel sink with mixer tap
- Full height fridge/freezer (270l)
- Waste bin
- Drawers and storage cupboards
- Blinds or sunscreens to all windows and doors
- Dimmable LED overhead and task lighting (24v)
- 220/240v outlets (4)
- Timber flooring

ACCOMMODATION

- All cabins and bathrooms feature opening portholes
- All cabins feature 220/240v power points
- All bathrooms feature electric freshwater toilets and 240v shaver points

OWNER'S STATEROOM

- Large double bed with drawers below
- Twin bedside tables
- Wardrobes with hanging and drawer storage
- Dressing table
- Mirror
- Sofa
- Storage lockers and drawers
- 40" UHD LED TV
- Radio/DVD/MP3 player
- Panoramic windows including opening porthole with venetian blinds
- Dimmable LED overhead and concealed lighting (24v)
- Individual berth lights
- 220/240v outlets (2)
- USB connection point
- Fitted carpet

EN-SUITE BATHROOM

- Washbasin with solid surface worktop
- Mirror
- Storage lockers
- Shower compartment with automatic pump out
- Extractor fan
- Window with opening porthole and venetian

blind

- LED overhead and concealed lighting (24v)
- Bathroom accessories
- Flooring in solid surface

FORWARD STATEROOM

- Large double bed with drawers below
- Wardrobe with shelves
- Dressing table
- Mirror
- Storage lockers
- Window with opening porthole and venetian blind
- Deck hatch
- LED overhead and concealed lighting (24v)
- Individual berth lights
- 220/240v outlets (2)
- USB connection point
- Fitted carpet

EN-SUITE BATHROOM

- Washbasin with solid surface worktop
- Mirror
- Storage lockers
- Shower compartment with automatic pump out
- Extractor fan

- Window with opening porthole and venetian blind
- LED overhead and concealed lighting (24v)
- Bathroom accessories
- Flooring in solid surface

STARBOARD GUEST CABIN

- Two single beds with drawers below (with option of double bed conversion)
- Bedside table
- Wardrobe with shelves
- Mirror
- Storage lockers and drawers
- Window with opening portholes and venetian blind
- LED overhead and concealed lighting (24v)
- Individual berth lights
- 220/240v outlets (2)
- USB connection point
- Fitted carpet

OPTIONAL CREW CABIN (IN PLACE OF AFT LAZARETTE)

- Single bed with storage below
- Wardrobe with shelf

- Storage lockers
- Opening porthole
- LED overhead lighting (24v)
- Individual berth light
- 220/240v outlet (1)
- Non-slip safety flooring

EN-SUITE BATHROOM

- Shower with automatic pump out
- Extractor fan
- Mirror
- Washbasin with solid surface worktop
- LED overhead lighting (24v)
- Bathroom accessories

POWER AND DRIVE SYSTEMS

- 5-bladed propellers in nickel aluminium bronze
- Bow thruster (130kgf/287lbf) with controls
- Engine room lighting
- Engine room access hatch and ladder
- Power-assisted electro-hydraulic steering system
- Trim tabs with indicators
- Electronic engine and gear shift controls
- Engine room extractor fan with electronic time delay

- Fresh water supply point in engine room
- Dripless self aligning shaft seals

ELECTRICAL SYSTEMS

24 Volt:

- 4 x heavy duty batteries for engine starting
- 4 x heavy duty auxiliary batteries
- Battery link facility with remote control at helm position
- Both battery banks are charged using a voltage sensitive relay that parallels both battery banks when a charging source is present
- 60 amp battery charger charges both banks of batteries via an automatic switch charging system
- Remote battery master switches with control switch at main switch panel
- Circuit breakers on all circuits
- 12v voltage dropper for certain navigation and radio circuits

220/240 Volt:

- 11Kw diesel generator in own sound shield with water cooled specially silenced exhaust
- Automatic fire extinguisher situated by generator

- 50 amp shore support inlet
- Generator/shore support change-over switch
- Polarity check system
- Earth leakage safety trip
- Circuit breakers on all circuits
- Power points in: owner's stateroom, guest cabins, galley and saloon area
- Shaver points in all bathrooms

FUEL SYSTEM

- Twin fuel tanks (in NS8 marine grade alloy) with interconnection system giving 715 gal / 858 US gal / 3,250l
- Fuel fillers on port and starboard side decks
- High-capacity duplex fuel filters with water traps with change-over valves, water warning sensors connected to warning lights at helm
- Remote fuel cocks in cockpit locker
- Fuel gauges at helm console

WATER SYSTEM

- Water tanks totalling 116 gal / 159 US gal / 530l plus 73 l / 16 gal / 19 US gal hot water calorifier
- Water heated by engines and 240v immersion heater
- Automatic water pump with filter

- Main circuit breaker at switch panel
- Water level gauge
- Deck filler
- Electric freshwater toilet system with 55 gal / 66 US gal / 250l holding tank, content gauge and low noise manual overboard discharge with dockside discharge system

FIRE EXTINGUISHERS

- Automatic/manual override fire extinguishers in engine room with warning system at helm position
- Hand-operated fire extinguishers (5) in owner's stateroom, forward and starboard guest cabins, galley and helm position
- Additional extinguisher fitted when optional aft cabin is specified

BILGE PUMPS

- Automatic/manual override electric bilge pumps in engine room (2), rudder area, lazarette and forward accommodation (6 in all)
- High-capacity manual bilge pump with valve system and suction points in same areas
- Electric bilge pumps have controls and warning

lights at helm and warning light with audible alarm at helm

OTHER STANDARD EQUIPMENT

- Ensign staff
- Fenders (6)
- Mooring warps (4)
- Boat hook
- First Aid kit
- Tool kit
- Owner's manual and engine manual
- Quilted bedspreads supplied to all cabins (except optional crew cabin)
- Anchor winch back up handle

FINISHES

- Teak-laid decks to transom platform, cockpit deck and steps to side decks
- Timber-laid floor to galley, aft dinette, saloon and helm
- Furniture in choice of Rovere oak or Alba oak with satin lacquer finish as standard. Silver oak or walnut in satin or gloss lacquer finished is available as an option.
- Solid surface floors and counter tops in all bathrooms

- Galley worktop in solid surface
- Choice of high quality carpet and upholstery fabric from extensive range
- Blinds or sunscreens to all windows and portholes
- Optional crew cabin has Altro non slip safety flooring, crew bathroom has white solid surface countertops